



CII-ITC Centre of Excellence
for Sustainable Development

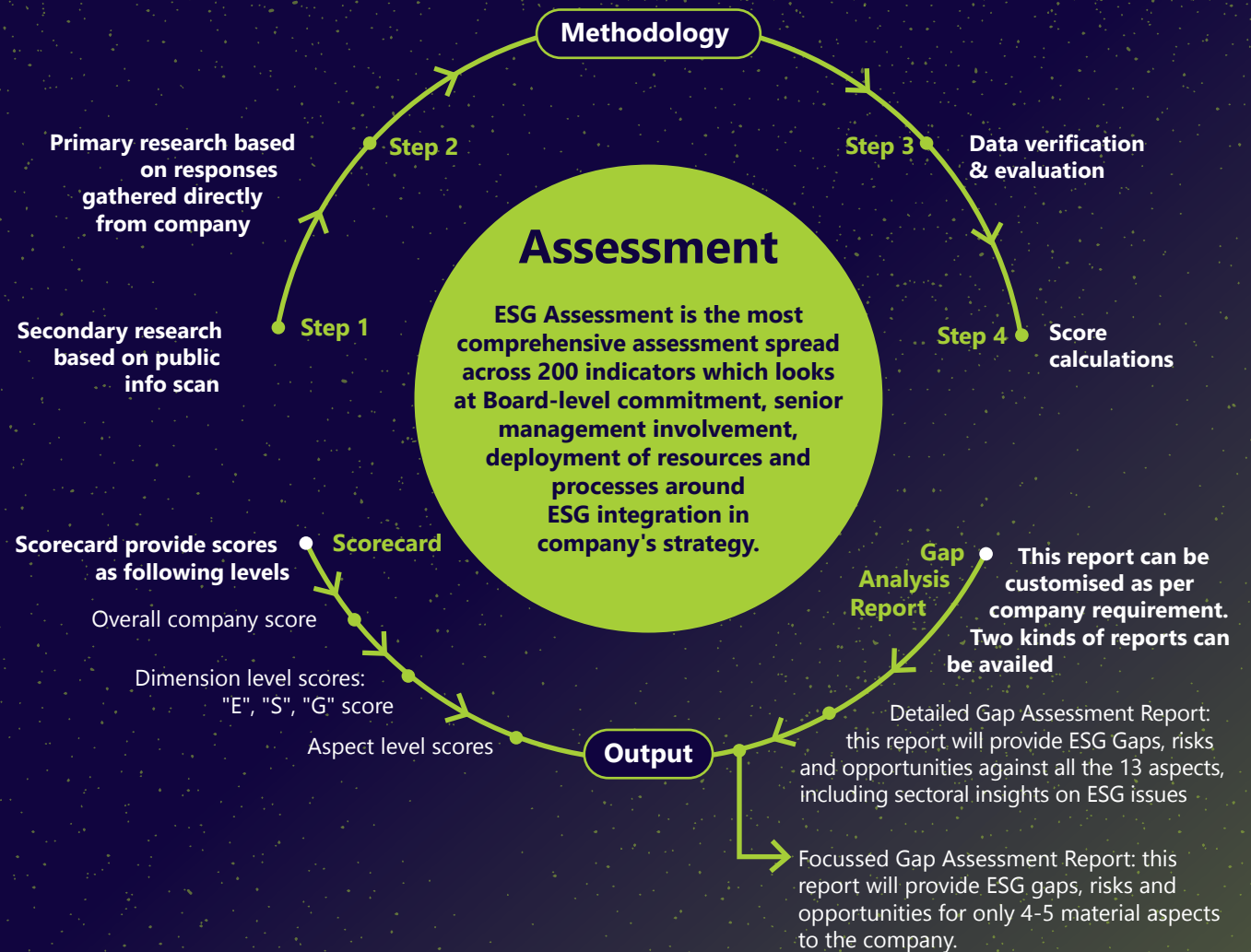


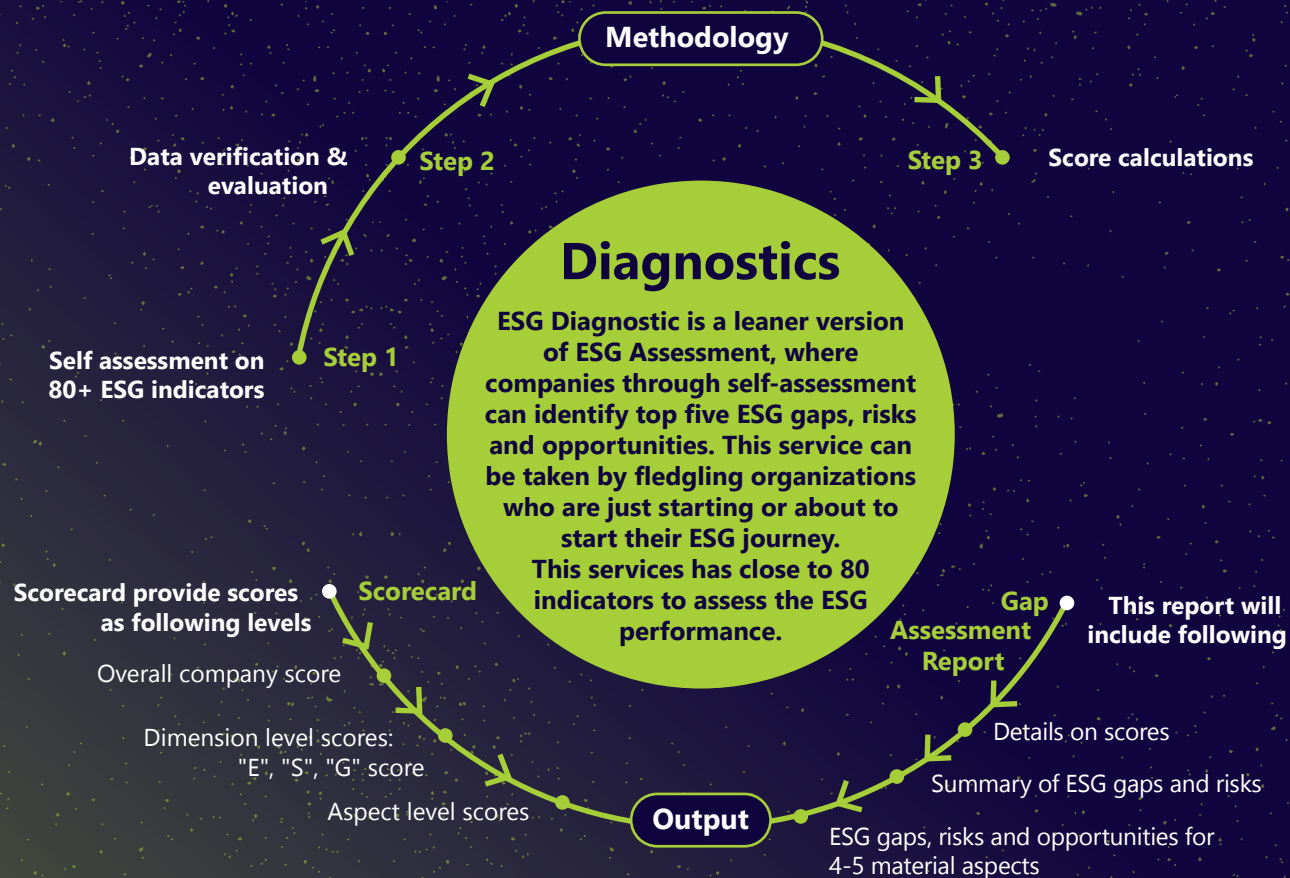
Confederation of Indian Industry



ESG Intelligence & Analytics

ESG Intelligence & Analytics services aims to support companies in their ESG journey. Driven by a SaaS based tool, the objective is to help companies identify key ESG gaps in line with key ESG material issues for the sector to which the company belongs to. The identified gaps can be around leadership, processes, key resource deployment, engagements with stakeholders and or results of a company. This helps companies to take strategic actions to close the gaps.





Benefits

Integrate the findings in building ESG strategy, goals and targets

Prepare for better ESG ratings

Hedge ESG risks: understand ESG risks and opportunities, across several functions and areas of a company

Prepare for better reporting and disclosure; both Indian and Global

Improve brand image

Improved access to capital

Aspects:

Areas against which the ESG performance is assessed are aligned with SDGs and relevant national and international frameworks

Environmental



Climate Action

Resource Efficiency

Product Responsibility

Environmental Management

Biodiversity



Social

Human Rights

Human Capital

Health & Safety

Corporate Social responsibility

Supply Chain



Governance

Corporate Governance

Risk Management

Business Ethics

Transparency & Disclosure

Tax Strategy

For further details, please contact:

surabhi.singh@cii.in | swati.pandey@cii.in

CII-ITC Centre of Excellence for Sustainable Development
3rd Floor, Andhra Association, 24/25 Institutional Area,
Lodhi Road, New Delhi 110003

W: www.sustainabledevelopment.in



/company/1526422



/ciicsd



/ciicsd



/user/ciicsd