



Confederation of Indian Industry



Confederation of Indian Industry

ESG INTELLIGENCE AND ANALYTICS SERVICES BROCHURE



CII-ITC Centre of Excellence
for Sustainable Development

ABOUT CII- ITC CESD



Confederation of Indian Industry

- Is a non-government, not-for-profit, industry-led and industry-managed organization
- 9000 members from the private as well as public sectors, including SMEs and MNCs, and an indirect membership of over 300,000 enterprises from 286 national and regional sectoral industry bodies.
- CESD - Inception in year 2006
- Helps business become sustainable organizations
- Works globally with organizations and governments
- It has been a pioneer of environment management systems, biodiversity mapping, sustainability reporting, integrated reporting, and social & natural capital valuation in India, BRSR, thus upgrading business in India to sustainable competitiveness.



Confederation of Indian Industry



**CII-ITC Centre of Excellence
for Sustainable Development**



CII-ITC Centre of Excellence
for Sustainable Development

ESG Intelligence & Analytics Services



CAPACITY BUILDING

Build competencies of your team for developing ESG Framework, metrics and reporting



ESG ADVISORY / CONSULTING

Help to compile and collect data

Design ESG Roadmap and Strategy

Integrate ESG in Policy, Processes, help build ESG framework



ASSESSMENT SOLUTION

Assess gaps & existing ESG performance

Prioritize ESG Material Topics and improve your performance



DISCLOSURE SOLUTIONS

Develop ESG Report / BRSR / GRI / Sustainability / IR

Improve the quality of your ESG Report and disclosures

ESG Assessment

Aspects:

Areas against which the ESG performance is assessed are aligned with SDGs and relevant national and international frameworks

Environmental

- Climate Action
- Resource Efficiency
- Product Responsibility
- Environmental Management
- Biodiversity



Social

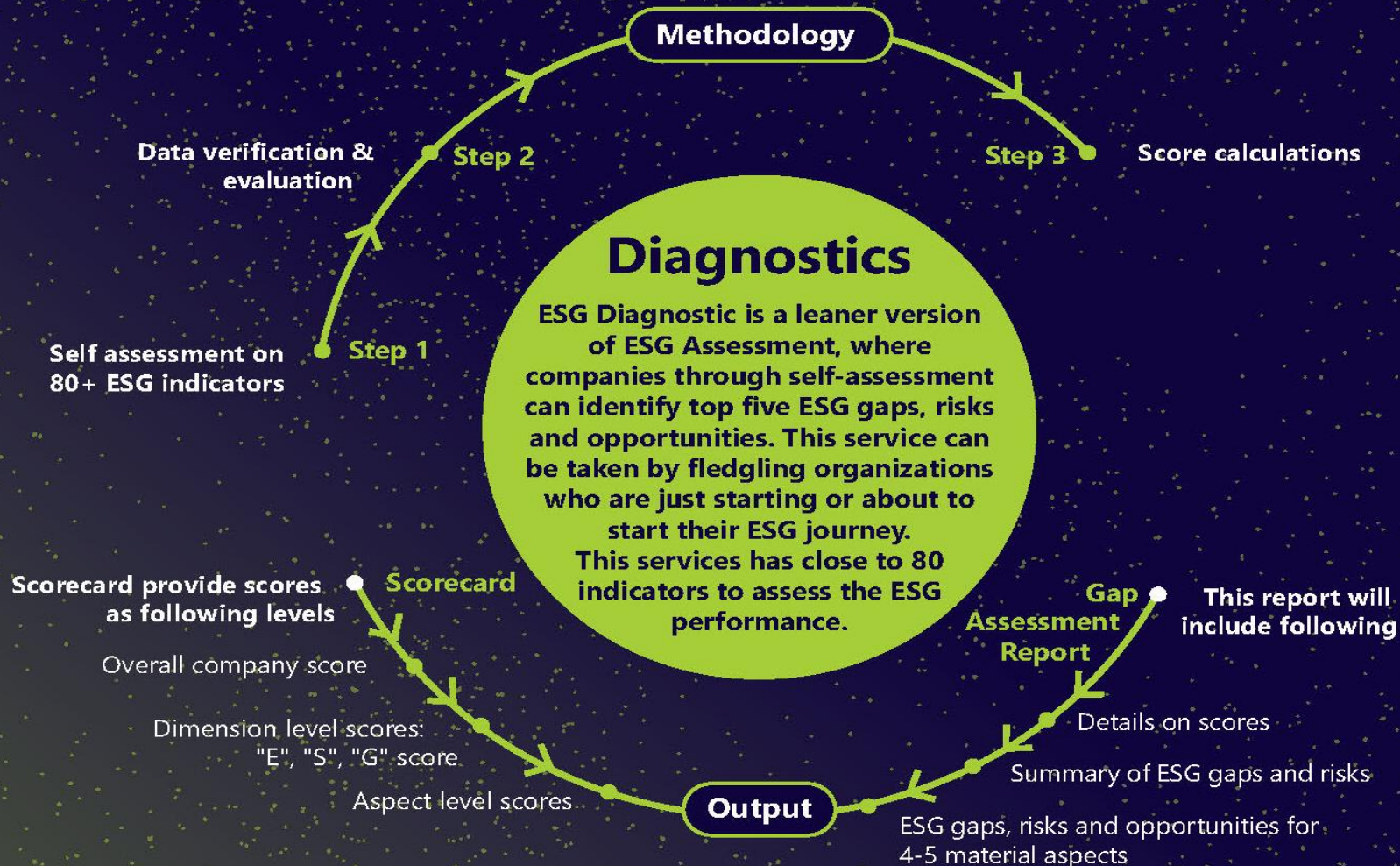
- Human Rights
- Human Capital
- Health & Safety
- Corporate Social responsibility
- Supply Chain



Governance

- Corporate Governance
- Risk Management
- Business Ethics
- Transparency & Disclosure
- Tax Strategy

ESG Assessment for Beginner Organizations



Benefits

Integrate the findings in building ESG strategy, goals and targets

Prepare for better ESG ratings

Hedge ESG risks: understand ESG risks and opportunities, across several functions and areas of a company

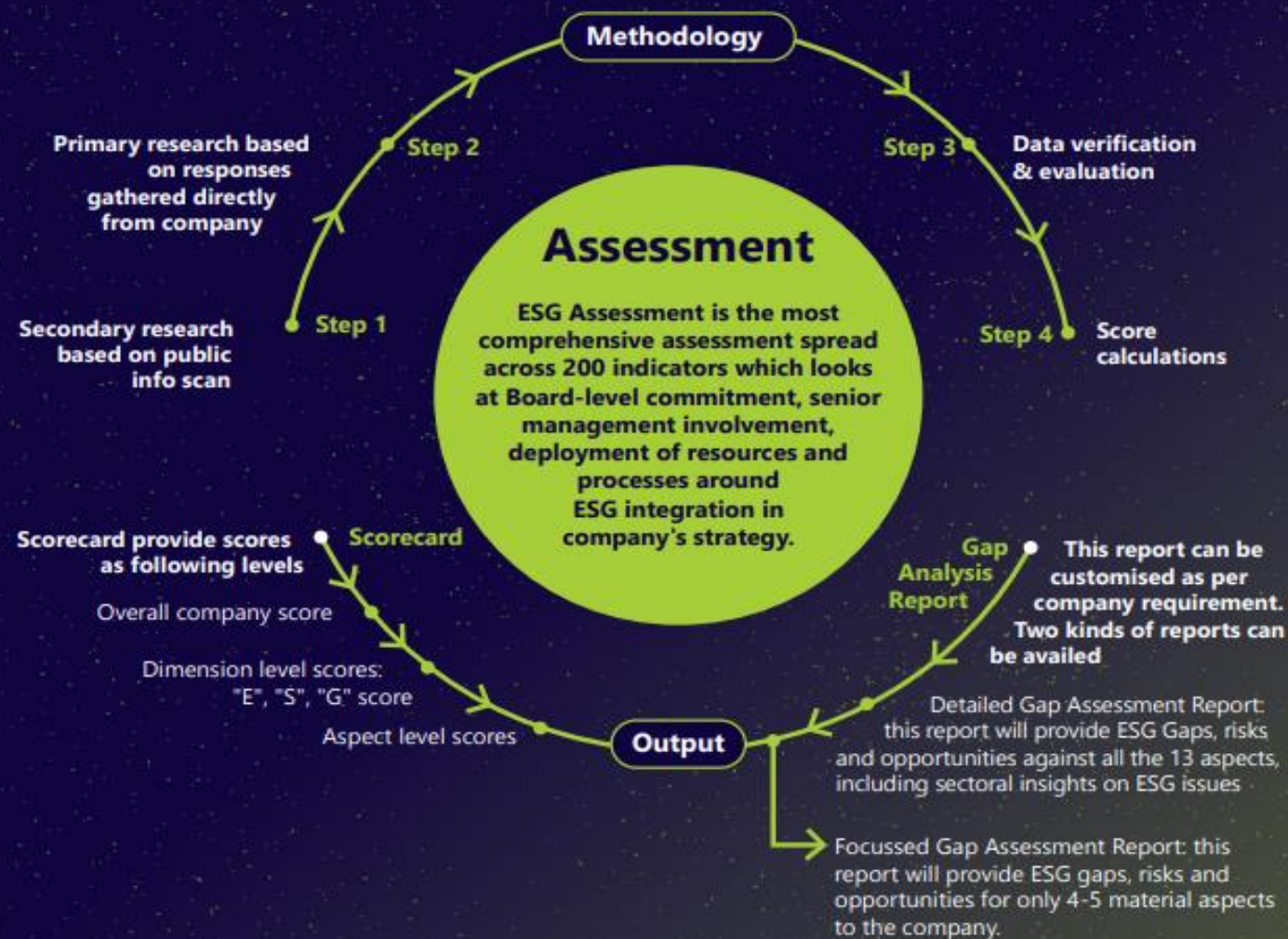
Prepare for better reporting and disclosure; both Indian and Global

Improve brand image

Improved access to capital

ESG Intelligence & Analytics

ESG Intelligence & Analytics services aims to support companies in their ESG journey. Driven by a SaaS based tool, the objective is to help companies identify key ESG gaps in line with key ESG material issues for the sector to which the company belongs to. The identified gaps can be around leadership, processes, key resource deployment, engagements with stakeholders and or results of a company. This helps companies to take strategic actions to close the gaps.



CII-ITC Centre of Excellence for Sustainable Development

For further queries, please contact

Swati Tewari - swati.pandey@cii.in , 9910289046

Neha Kaul – neha.kaul@cii.in , 9899882901

Surabhi Singh - surabhi.singh@cii.in , 9958582768